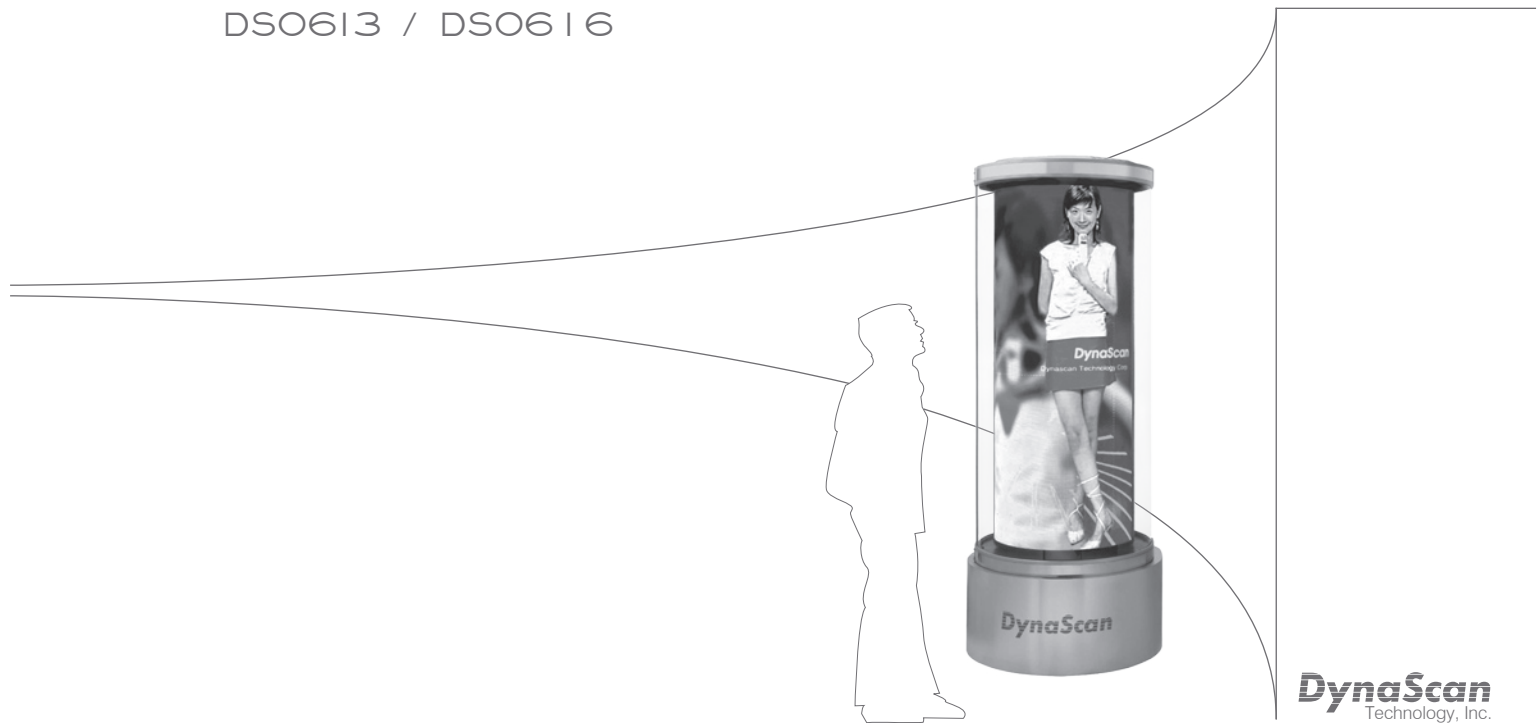


QUICK START GUIDE

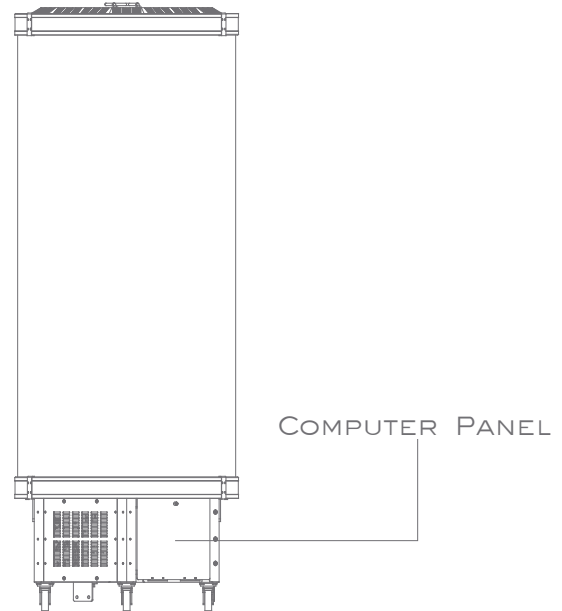
DS0613 / DS0616



DynaScan
Technology, Inc.

UNIT OVERVIEW

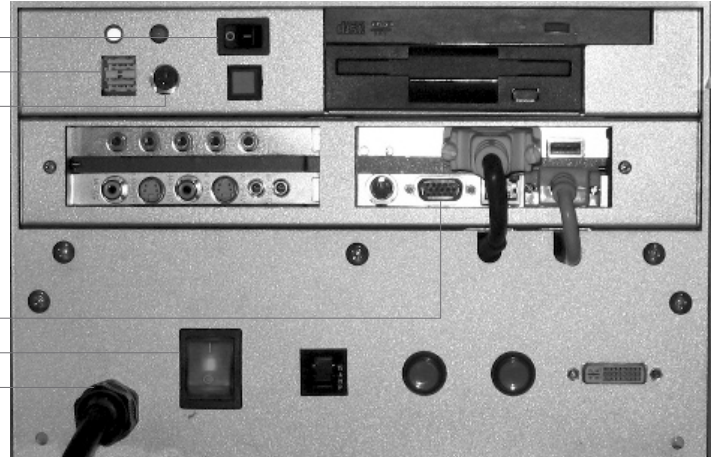
Model Number:	D50613	D50616
Physical Dimensions: [in metric]:	33" dia x 78"h 0.83m x 1.97m	33" dia x 88"h 0.83m x 2.23m
Screen Size: [in metric]:	80"w x 50"h 2.00m x 1.30m	80"w x 62"h 2.00m x 1.60m
Displays in:	1, 2 or 3 screens	1, 2 or 3 screens
Resolution: (Full Wrap)	744 x 592	960 x 720
Pixel Size:	2.7mm x 2.2mm	2.1mm x 2.2mm
Brightness:	750 nits	750 nits
Weight:	550 lb [250kg]	650 lb [300kg]
Power Requirement:	220V / 15A / 1 Phase	220V / 15A / 1 Phase



COMPUTER PANEL

- ¹ COMPUTER POWER SWITCH
- USB PORT (x2)
- PS2 PORT

- EXTERNAL VGA MONITOR PORT
- ² MAIN POWER ON/OFF SWITCH
- POWER CORD



GETTING POWER FOR THE UNIT

- Locate the end of the Power Cord
- There are 3 wires: Green = Ground
 - White = Phase 1
 - Black = Phase 2
- Once plug is installed, plug unit into 208/220VAC

STARTING UP THE UNIT

- Plug mouse --> USB or PS2 port
- Plug keyboard --> USB or PS2 port
- Plug external VGA monitor --> External VGA port
(monitor is not mandatory but will help setting up easier)
- Turn the unit on by flipping the main power switch
- DynaScan content will then start up

TURNING OFF THE UNIT


- Press and hold the ¹computer power switch for 5-10 seconds
- Now turn off the ²main power switch

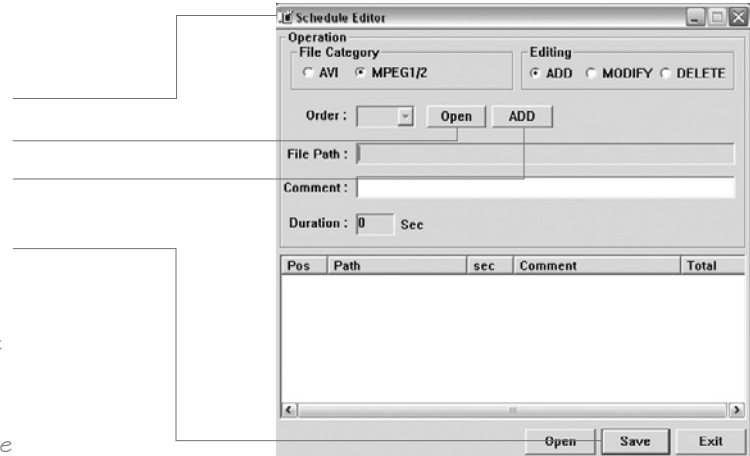
TYPE OF VIDEO SIGNAL DYNASCAN RECOGNIZES

- D50G13 / D50G16 will recognize a video signal that is 1024 x 768 at a 60Hz refresh rate through a DVI-D interface


SAMPLE SOFTWARES (SCHEDULE EDITOR & DS PLAYER) ARE INCLUDED
PLEASE REFER TO SECTION 1 & 2

1.1 HOW TO USE SCHEDULE EDITOR

- Click  on desktop to open schedule editor
- Click **Open** to retrieve the content you wish to display
- Click **ADD** to add content to schedule editor
- Repeat this step to loop one content with another
- Click **Save** to save schedule in the same directory as the content is in
- Make as many schedules as you would like
- Make copies of the content if you wish to use the same content to make multiple schedules
- * Do NOT use the same content file more than once!
- One or more pieces of content should only be used for one schedule



2.1 HOW TO PLAY A SCHEDULE

- Click  on desktop to open DynaScan Player
- Double click on the player (black frame) to open dialogue box
- Under "Schedule":

- One** - DynaScan in one full wrap, single screen
- Two** - DynaScan in two screens with two different schedules
- Three** - DynaScan in three screens with three different schedules

- If you click on "One", open the schedule file made
- If you click on "TWO"/"THREE", click **Next >** to display Wizard
- Choose between splitting the screen vertically or horizontally
- Click **Next >** to add the schedule files into the frames
- Once you have the schedules loaded, click **Next >**
- Click **Finish**
- The schedules are up and running
- * Using the MULTI SCREEN option could cause video lagging



2.2 HOW TO PLAY A SINGLE FILE

- Double click on the player (black frame) to open dialogue box
- Under "Single File", click **Open**
- Load a MPG 1, MPG2 or an AVI file
- Click **Open** and the file will start to play



2.3 HOW TO FORMAT CONTENT FOR THE DS PLAYER

DS0613

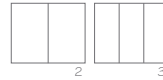


one-screen = 744w x 592h pixels
 two-screen = 372w x 592h pixels
 three-screen = 248w x 592h pixels

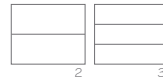


one-screen = 744w x 592h pixels
 two-screen = 744w x 296h pixels
 three-screen \cong 744w x 197h pixels

DS0616



one-screen = 960w x 720h pixels
 two-screen = 480w x 720h pixels
 three-screen = 320w x 720h pixels



one-screen = 960w x 720h pixels
 two-screen = 960w x 360h pixels
 three-screen = 960w x 240h pixels

- DynaScan Player supports: AVI, MPG1, MPG2 and Flash

* May need to install some codec in order to support all formats

2.4 HOW TO MAKE DYNASCAN SCREEN SPIN

- Double click on the player (black frame) to open dialogue box

- Under "Setting", click **Window** to display Window Setting

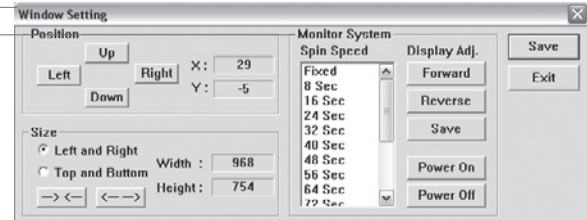
- Adjust the spin speed under "Monitor System"

FIXED = screen does NOT spin

8 Sec = fastest spin speed

120 Sec = slowest spin speed

- Save and Exit





E. info@dynascanusa.com | DynaScan Technology, Inc.
www.dynascanusa.com | 7 Chrysler, Irvine, CA 92618, USA
T. 949.421.0348 / F. 949.421.0353